

## SPECIFICATION OF DLB KUROSHIO II



### DERRICK/ LAY BARGE "KUROSHIO II"

#### 1. GENERAL

Name	:	KUROSHIO II
Type	:	Non-propelled, steel flat bottom type Derrick & Lay Barge center ramp
Year of Construction	:	February 1976 Year 1995 (Accommodation Upgrade) Year 2000 (Helideck Modification) Year 2003 (Accommodation Upgrade) Year 2011 (Diesel Generator Replacement) Year 2013 (Accommodation Upgrade)
Condition of Barge	:	Good
Classification	:	ABS Maltese Cross † A1-E
Gross tonnage	:	13,518 tons
Length	:	460 ft (140 m)
Width	:	112 ft (34 m)
Depth	:	31.2 ft (9.5 m)
Towing Draft	:	about 15 ft (about 4.6 m)
Operating Draft	:	about 14 ft - 18 ft (about 4.3 m – 5.5 m)
Displacement	:	24,000 tons
Accommodations	:	Air-conditioned quarters for 316 men
Galley	:	All necessary messing facilities to support 316 men
Hospital	:	An attendant and equipped clinic for immediate first aid (2 beds)
Helideck	:	73 ft x 73 ft (22 m x 22 m) with loading capacity for SIKORSKY S-61N class
F.O. Storage Capacity	:	1,717 m <sup>3</sup>
F.W. Storage Capacity	:	2,242 m <sup>3</sup>
Ballast Capacity	:	11,736 tons
Fresh Water Maker	:	60 tons/day x 3 sets
Deck Storage	:	1,907 m <sup>2</sup> 6.0 -13.0 tons/m <sup>2</sup>

## SPECIFICATION OF DLB KUROSHIO II



### 2. ANCHOR & MOORING SYSTEM

#### 1) Mooring Winch

Type	:	KITAGAWA, Single Drum, Electric Driven
Stall	:	138 tons
Rating	:	Max. 60 tons x 15 m/min. Min. 3.5 tons x 210 m/min.
Brake	:	270 tons
Wire	:	6 x Fore lines, 4 x Aft lines 56 mm $\varnothing$ x 1,700 m
Anchor	:	Delta Flipper 12 tons x 8 sets

#### 2) Anchor Windlass

Capacity	:	28 tons x 9 m/min.
Chain	:	66 mm (Gr. 2 ) x 12 shots
Anchor	:	Stockless 5,610 kg
Number	:	2 sets

### 3. DERRICK CRANE

Type	:	CLYDE Model 60
Main Hoist	:	943 MT at 24.3 m radius (Fixed over stern mode) 725 MT at 27.4 m radius (Slew mode)
Aux. Hoist	:	272 MT at 51.8 m radius
Whip	:	45 MT at 85.3 m radius
Boom Length	:	70m + 9m + 4.5m
Slewing Speed	:	0.5 rpm

### 4. AUXILIARY EQUIPMENT

#### 1) Shipboard Power

Diesel Generator	:	1,500 KW x 450 V x 4 sets 150 KW x 450 V x 1 set 800 KVA x 450 V x 3 sets
------------------	---	---------------------------------------------------------------------------------

## SPECIFICATION OF DLB KUROSHIO II



- 2) Air Compressor
  - Electric : 25 kg/cm<sup>2</sup> x 47 m<sup>3</sup>/hr x 2 sets
  - Diesel : Ingersol-Rand XHP 750 CAT x 3 sets
  
- 3) Pile Driving Boiler
  - Diesel-fired : OSAKA BOILER OE-1  
13 kg/cm<sup>2</sup> x 11 tons/hr x 1 set
  
- 4) Jetting Pump
  - Multi-stage centrifugal pump
  - Electric : 5.3 m<sup>3</sup>/min. x 200 m x 3 sets
  
- 5) Crawler Crane
  - Type : KOBELCO 7200
  - Main Hoist : 32 MT at 22m radius  
(Max. 200 tons at 4.5m radius)
  - Aux. Hoist : 15 S. tons
  - Boom length : 150 ft (45.72 m)
  
- 6) Service Winches
  - Type : Kitagawa  
Electric-hydraulic twin drum
  - Rating : Max. 10 tons x 24 m/min.
  - Brake : 15 tons
  - Wire : 32 mm  $\varnothing$  x 500 m x 2 lines
  - Number : 2 sets
  
- 7) Pipelay Stations
  - Welding Stations : 4 stations
  - NDT Station : 1 station
  - Repair Station : 1 station
  - Coating Station : 2 stations
  
- 8) Tensioning System
  - Type : WESTECH LPT 165 S
  - Capacity : 75 MT x 2 units (Total 150 MT)

## SPECIFICATION OF DLB KUROSHIO II



### 9) Laydown Winch

Type	:	WESTECH 350 Single drum hydraulic driven
Rating	:	Max. 160 tons
Wire	:	75 mm $\varnothing$ x 1,000 m
Number	:	1 set

### 10) Pipelay Stinger

Rigid Type	:	40 m x 2 units
New Type	:	32 m x 1 unit

### 11) Forklift

Mitsubishi	:	FD40KLT 4.5 ton
Mitsubishi	:	FD30T 3 ton

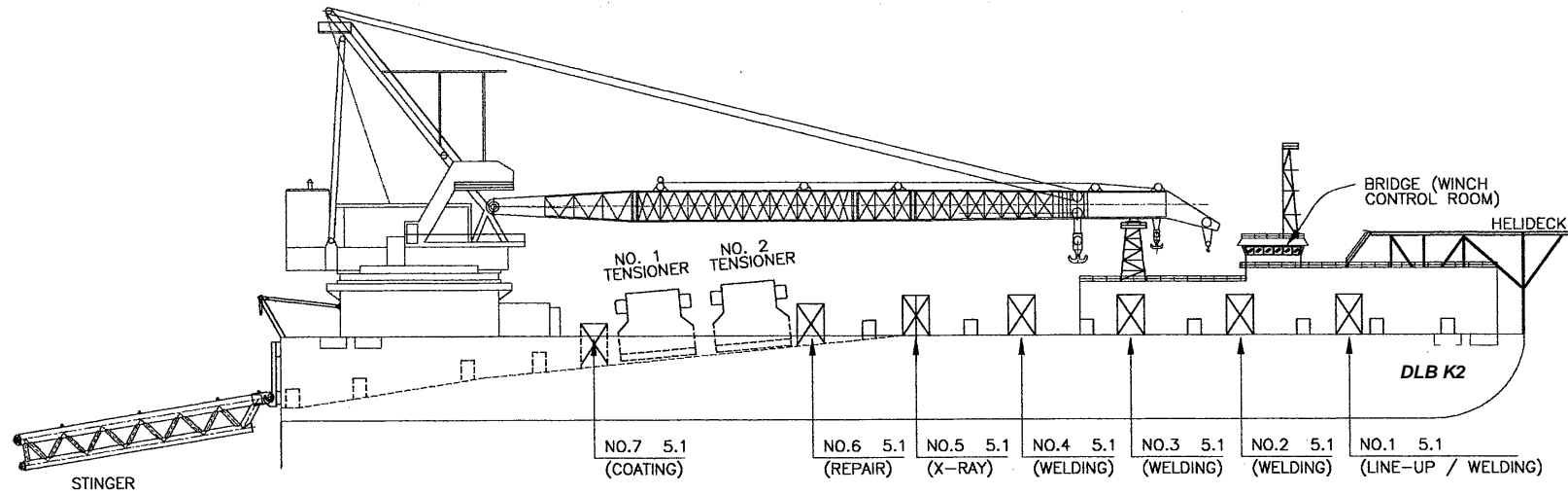
## 5. NAVIGATION & COMMUNICATION SYSTEM

### 1) Navigation equipment

Radar	:	Furuno, FR-1510MK3, 12KW, 96 miles
Gyro compass	:	Tokimec Inc, ES110
Echo sounder	:	JRC, JFE-380, 20W, 800 m
Wind Indicator	:	Koshin Denki Kogyo, KE-111
GPS	:	Furuno, GP31, GP32, GP33

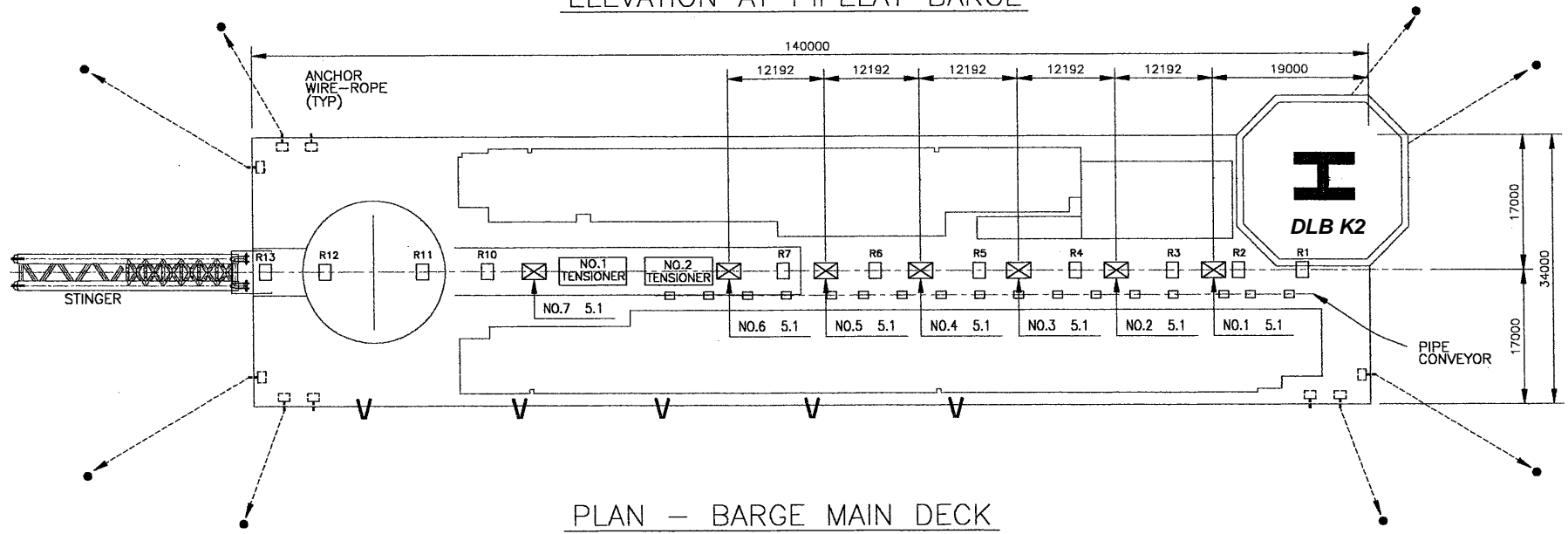
### 2) Communication Equipment

SSB	:	JRC, JSB-171 MHF/HF 150W, 0.1 - 29.9999 MHz
Marine VHF	:	JRC, JHV-227 type. All channels, 20 W
Inmarsat "B"	:	JRC, B system, Tel / Telex / Fax
Inmarsat "F"	:	Furuno Felcom-70
Mini-M	:	GSP 3000 M, Tel / Fax / Data
Beacon	:	Southern Aviomics, 345 KHz
Air band radio	:	Walter Dittel, 118 - 136 KHz
V-sat	:	1Mbps Dedicated Satellite bandwidth on T-18 (Duplex)




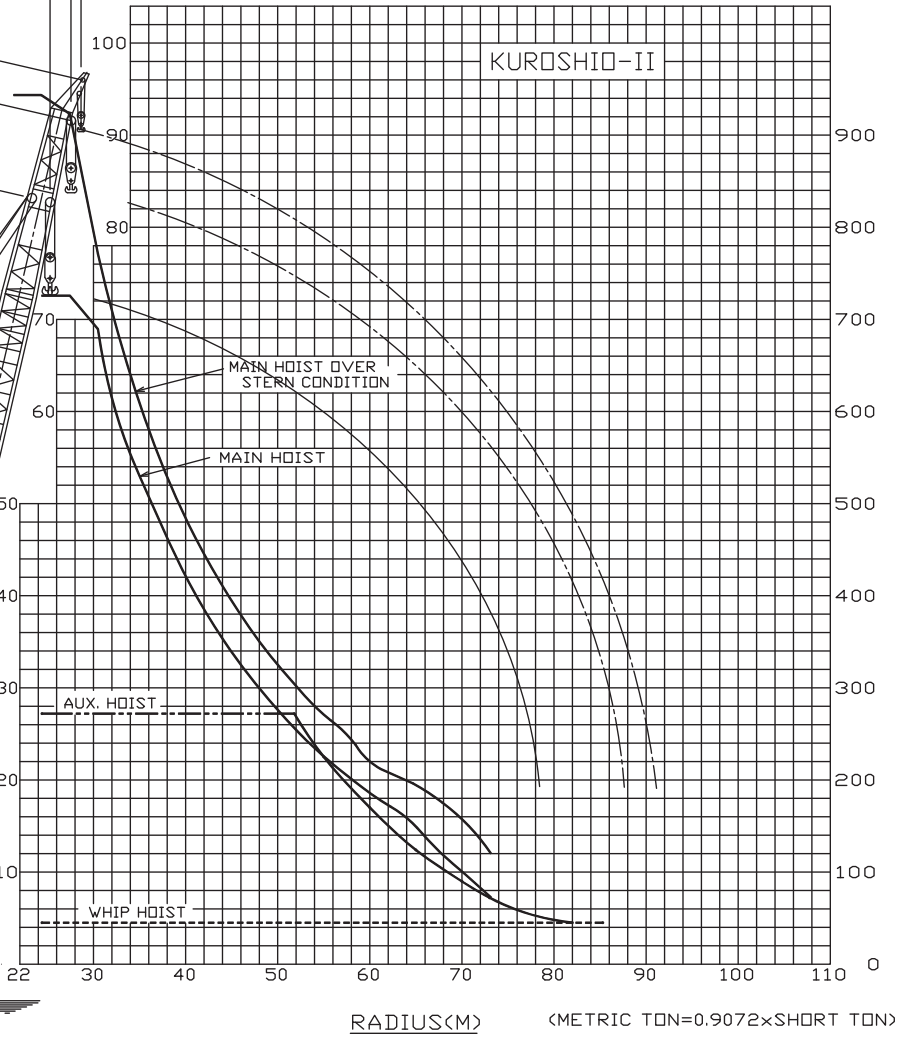
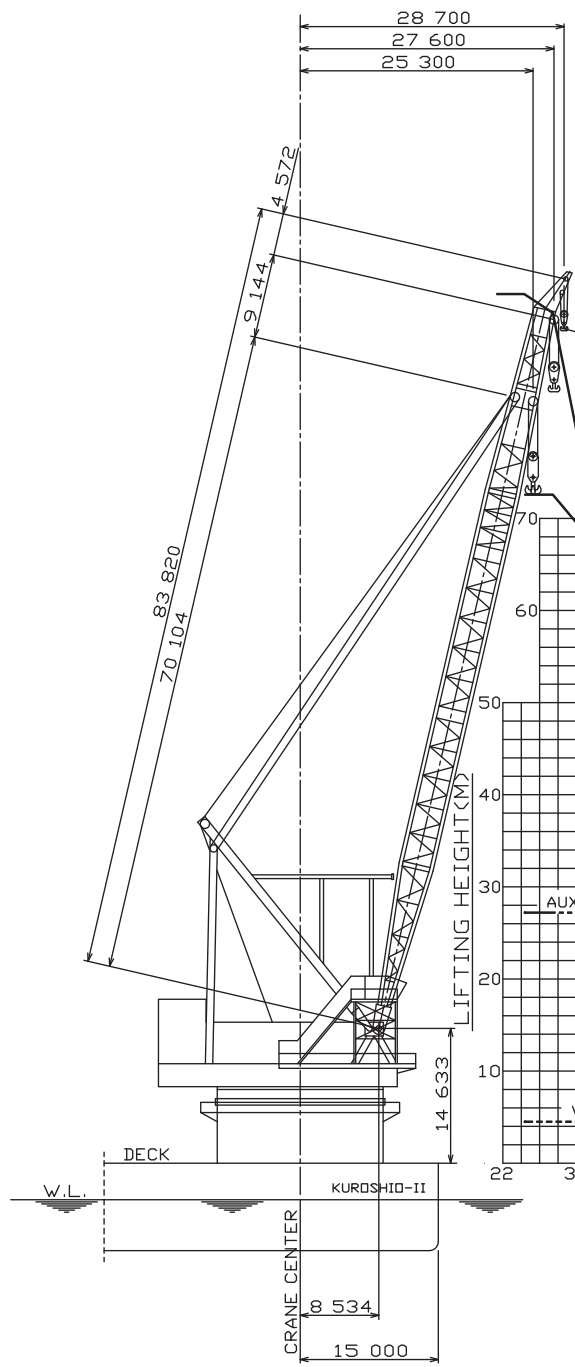
**BARGE PARTICULARS:-**  
 CLASS : ABS AI & MK-MS  
 DERRICK & PIPE LAY BARGE  
 LENGTH (O.A) ....= 140 M  
 BREADTH ....= 34 M  
 DEPTH ....= 9.5 M  
 DRAFT (DESIGN) ...= 5.525 M  
 DISPLACEMET ....= 24,000 TONS  
 GROSS TONNAGE..= 10,254 TONS  
 NET TONNAGE ...= 6,172 TONS

ELEVATION AT PIPELAY BARGE



PLAN - BARGE MAIN DECK

<b>STANDARD DRAWING</b>	DWG.NO: SK-021
LAYOUT OF KUROSHIO - II	
 NIPPON STEEL & SUMIKIN ENGG. CO, LTD	REV.NO. 0



KUROSHIO-II 800 S.T.  
LIFTING CAPACITY CURVE